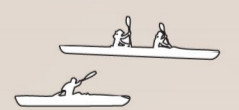


Our aim was to address housing problems facing the Inuit population in a delicate and socially conscious way. Being a culture with a history of suffering from foreign intervention, we were careful not to impose, but to humbly suggest.

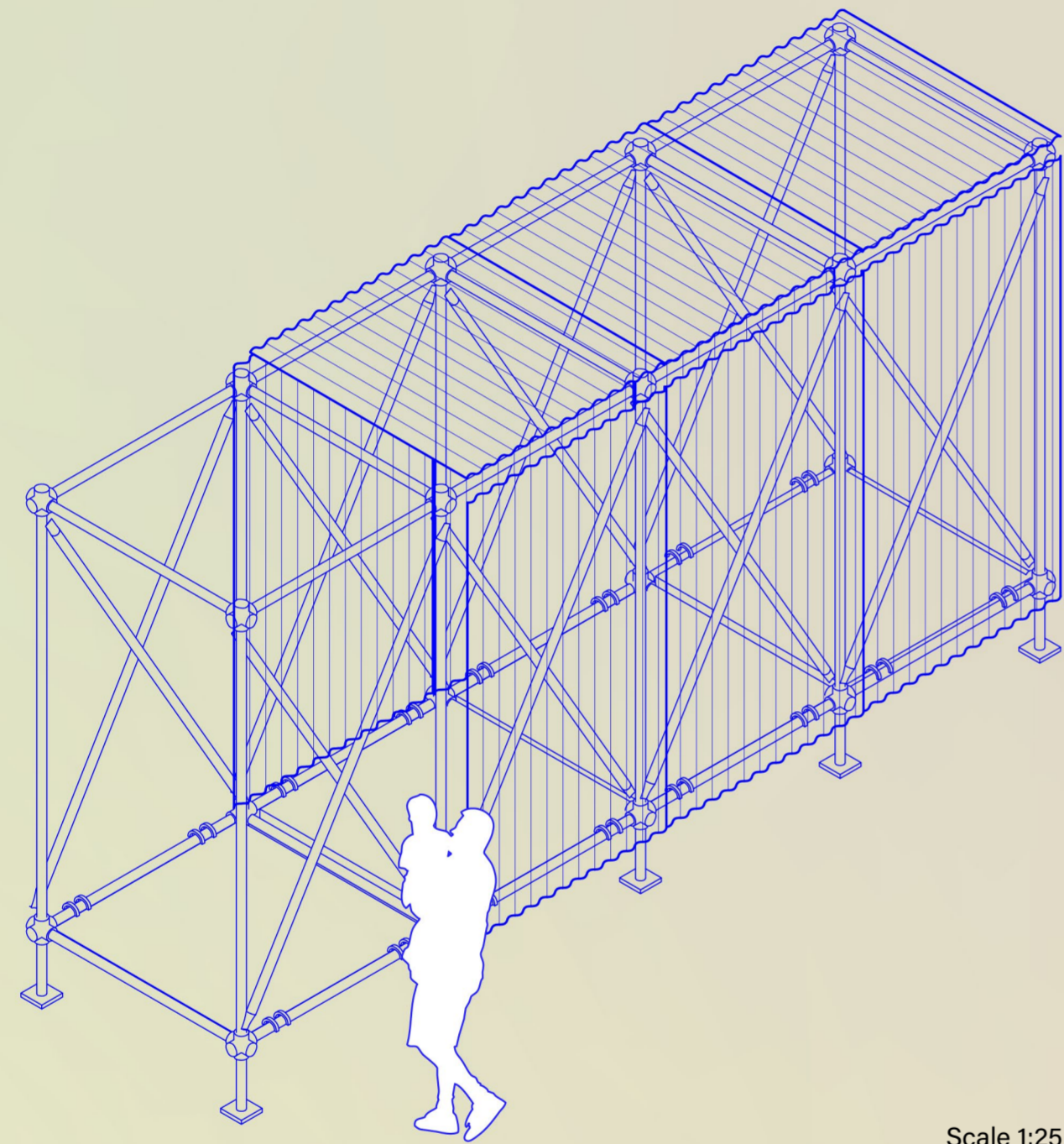
Appropriating a widely available and inexpensive building system consisting of mainly scaffolding and polycarbonate sheeting, we created a language of assembly and imagined its possible configurations. It can be implemented at across scales, uses and levels of permanence: from a piece of furniture to an infrastructure. Being an inherently temporary system of building, it allows easy assembly and disassembly, appropriate for a traditionally nomadic culture.

The system embraces the spirit of recycling and re-using and by utilizing otherwise unassuming found objects, the architecture avoids monumentality or commodification - people are free to explore the richness of its own spacial possibilities.

## RECONFIGURING THE NORTH

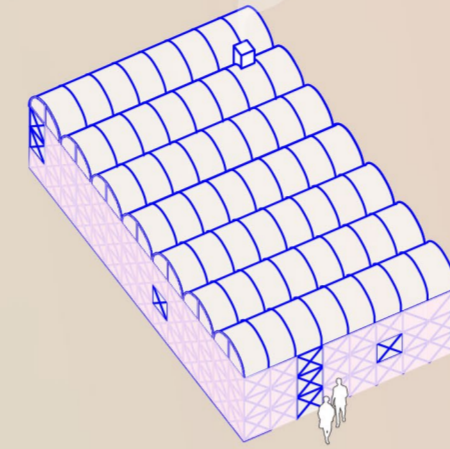


Detail Isometric

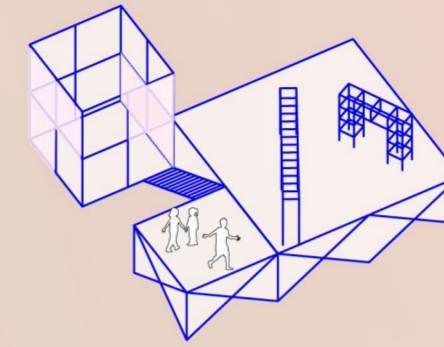


Scale 1:25

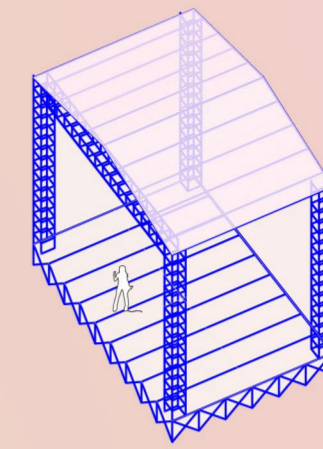
Imagining Configurations



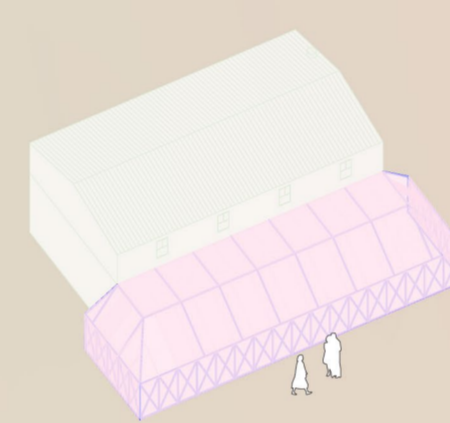
Inter-community rest stop  
8 x 14



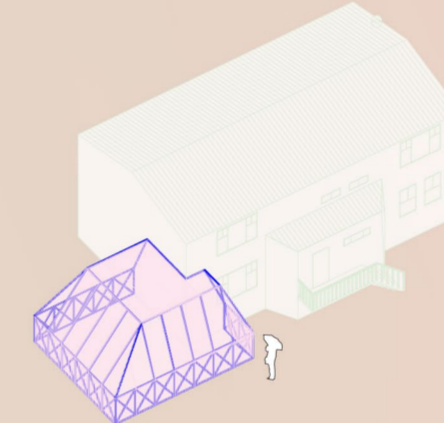
Play-sculpture  
9 x 9



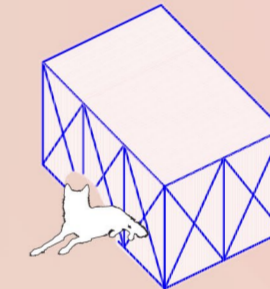
Stage  
6 x 9



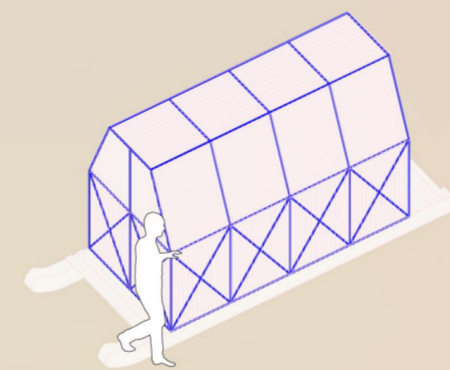
Duplex addition  
9 x 17



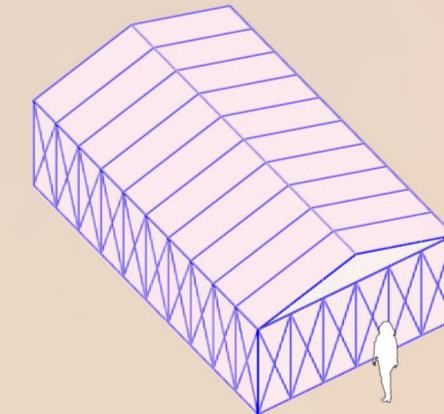
Single-family home addition  
6 x 7



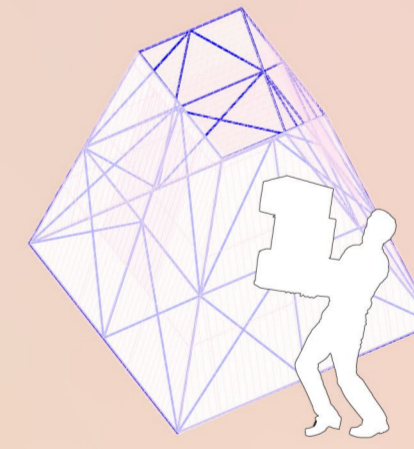
Dog house  
2x3



Sled cabin  
2 x 4



Free-standing shelter  
6 x 10



Ice fishing cabin  
3 x 3